

SLOAN'S LAKE MEDICAL CENTER

1601 LOWELL BOULEVARD | DENVER, COLORADO

AKA 1690 MEADE STREET | DENVER, CO



AVAILABLE SPACE

±20,050
square feet

PARKING RATIO

5:1,000

RENTAL RATES

\$22-24
/sf/yr NNN

FEATURES

- Central location
- Abundant parking
- Onsite cafeteria
- Adjacent to Sloan's Lake
- Located on RTD bus route
- 3 blocks from light rail station

FOR MORE INFORMATION

NATASHA FELTEN
nfeltten@colocomm.com
JON UNGAR
jungar@colocomm.com
303 327 5800


**COLORADO COMMERCIAL
COMPANIES**
383 CORONA STREET | SUITE 322
DENVER, CO 80218
WWW.COLOCOMM.COM



SLOAN'S LAKE MEDICAL CENTER

1601 LOWELL BOULEVARD

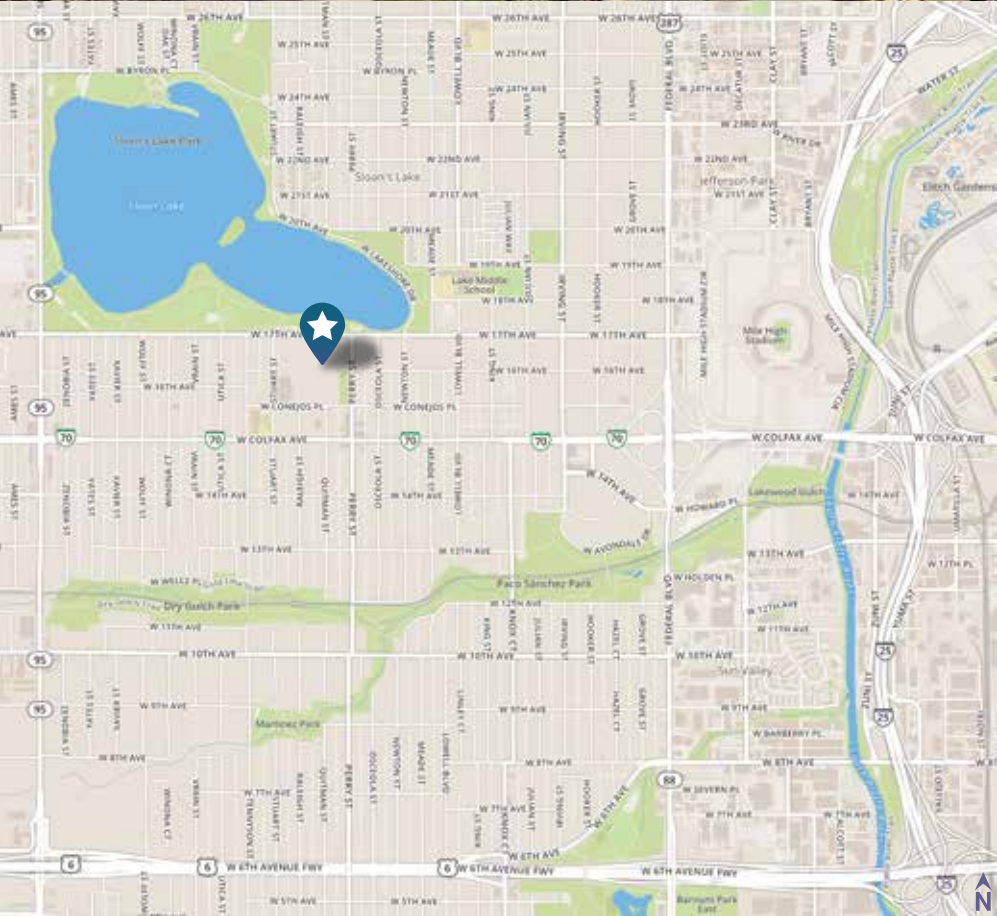
AKA 1690 MEADE STREET
DENVER, COLORADO

AREA AMENITIES

Walking distance to the redeveloped Sloans Denver

- Starbucks
- Tap & Burger
- Alamo Draft House

Enjoy unbelievable views of Sloans Lake, Downtown Denver and the mountains



DRIVE TIMES

10 minutes to Downtown

33 minutes to DIA

9 minutes to Denver Health

13 minutes to Lutheran Medical Center

17 minutes to Saint Joseph Hospital

FOR MORE INFORMATION

NATASHA FELTEN
 nfelten@colocomm.com
JON UNGAR
 jungar@colocomm.com
303 327 5800



COLORADO COMMERCIAL COMPANIES
 383 CORONA STREET | SUITE 322
 DENVER, CO 80218
 WWW.COLOCOMM.COM

No warranty or representation, express or implied, is made as to the accuracy of the information contained herein, and the same is submitted subject to errors, omissions, change of price, rental or other conditions, withdrawal without notice, and to any special listing conditions imposed by our Principals.

MEDICAL BUILDING FEATURES

Oxygen farm on site
Medical air and vacuums available
Established ambulance entrance
24/7 security guard at reception desk
Secured entry after 7:00 P.M.
Onsite maintenance crew
Established reputation of compliance with JCAHO,
CDPH&E, CMS, EPA and Denver Fire.
1,000 KWH backup generator
6,000 Gallon diesel tank for generator
8,000 Gallon diesel back up for boilers

SLOAN'S LAKE MEDICAL CENTER

1601 LOWELL
BOULEVARD

AKA 1690 MEADE STREET
DENVER, COLORADO



AREA DEMOGRAPHICS

	0.5 MILE RADIUS	1 MILE RADIUS	2 MILE RADIUS
POPULATION	7,100	23,164	86,864
HOUSEHOLDS	2,784	9,320	36,592
FAMILIES	1,542	4,882	17,901
AVERAGE HOUSEHOLD SIZE	2.51	2.46	2.31
OWNER OCCUPIED HOUSING UNITS	816	3,157	14,864
RENTER OCCUPIED HOUSING UNITS	1,968	6,163	21,727
MEDIAN AGE	31.3	33.1	33.6
AVERAGE HOUSEHOLD INCOME	\$52,882	\$56,850	\$70,220

FOR MORE INFORMATION

NATASHA FELTEN

nfelten@colocomm.com

JON UNGAR

jungar@colocomm.com

303 327 5800



**COLORADO COMMERCIAL
COMPANIES**

383 CORONA STREET | SUITE 322
DENVER, CO 80218
WWW.COLOCOMM.COM

No warranty or representation, express or implied, is made as to the accuracy of the information contained herein, and the same is submitted subject to errors, omissions, change of price, rental or other conditions, withdrawal without notice, and to any special listing conditions imposed by our Principals.

SLOAN'S LAKE MEDICAL CENTER

1601 LOWELL BOULEVARD | DENVER, COLORADO

AKA 1690 MEADE STREET | DENVER, CO

READY TO OCCUPY MEDICAL SPA SPACE

SUITE SIZE

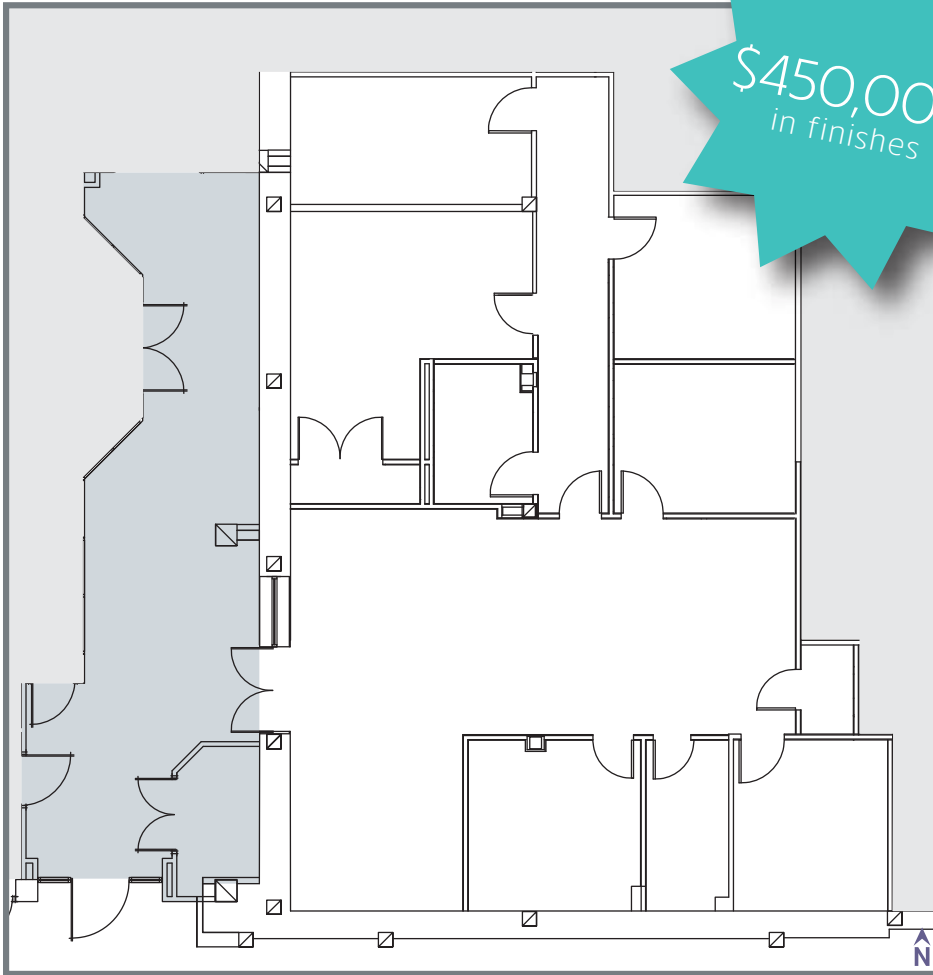
SUITE 150*

±2,153
square feet

Located right off of building lobby. Gorgeous reception area with high level of finish throughout, five exam/treatment rooms with millwork and plumbing, one office, storage closet, IT closet, and private restroom.

*suite numbers subject to change

\$450,000
in finishes



FOR MORE INFORMATION

NATASHA FELTEN

nfelten@colocomm.com

JON UNGAR

jungar@colocomm.com

303 327 5800



**COLORADO COMMERCIAL
COMPANIES**

383 CORONA STREET | SUITE 322
DENVER, CO 80218
WWW.COLOCOMM.COM

No warranty or representation, express or implied, is made as to the accuracy of the information contained herein, and the same is submitted subject to errors, omissions, change of price, rental or other conditions, withdrawal without notice, and to any special listing conditions imposed by our Principals.

SLOAN'S LAKE MEDICAL CENTER

1601 LOWELL BOULEVARD | DENVER, COLORADO

AKA 1690 MEADE STREET | DENVER, CO

WHITEBOX MEDICAL OFFICE SPACE

SUITE SIZE

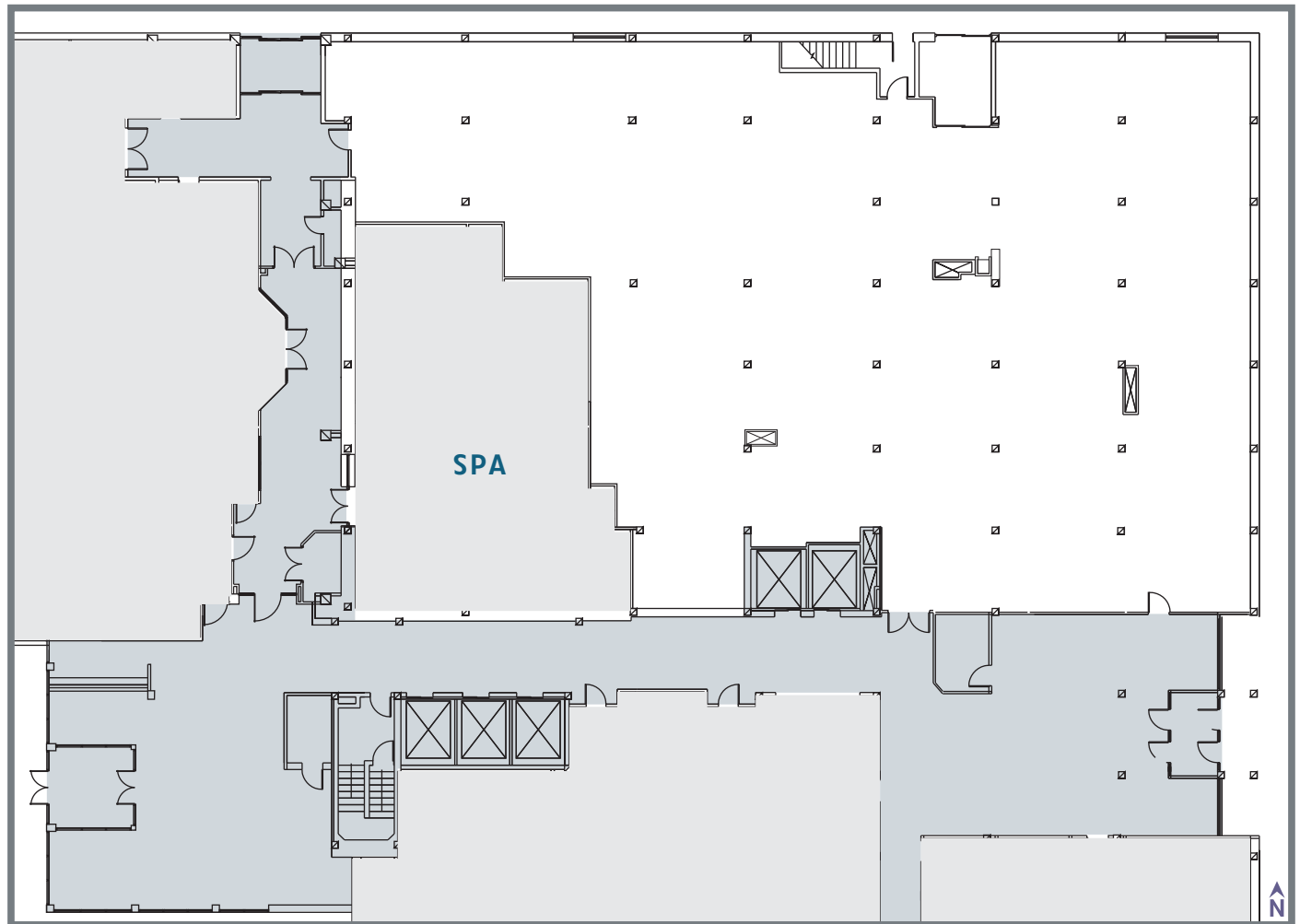
± 9,059
square feet

SUITE 100*

Owner has whiteboxed the space so a user can design for custom requirements. Features a private drive through entrance.

*suite numbers subject to change

CORNER SUITE WITH COVERED DRIVE ACCESS



FOR MORE INFORMATION

NATASHA FELTEN

nfelten@colocomm.com

JON UNGAR

jungar@colocomm.com

303 327 5800



**COLORADO COMMERCIAL
COMPANIES**

383 CORONA STREET | SUITE 322

DENVER, CO 80218

WWW.COLOCOMM.COM

No warranty or representation, express or implied, is made as to the accuracy of the information contained herein, and the same is submitted subject to errors, omissions, change of price, rental or other conditions, withdrawal without notice, and to any special listing conditions imposed by our Principals.

SLOAN'S LAKE MEDICAL CENTER

1601 LOWELL BOULEVARD | DENVER, COLORADO

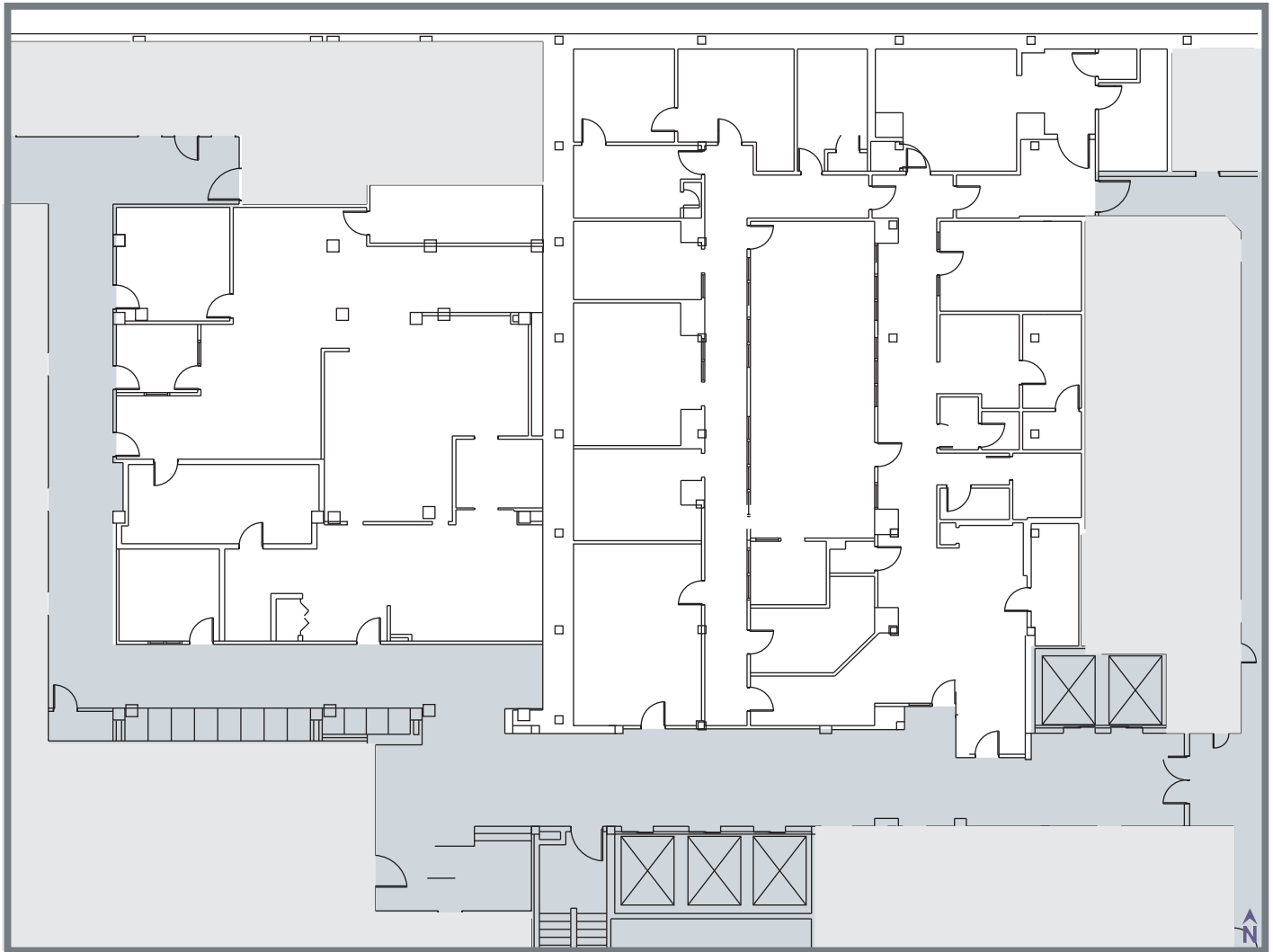
AKA 1690 MEADE STREET | DENVER, CO

SUITE SIZE

±8,838
square feet

LOWER LEVEL

Divisible to ±800 SF. This lower level space can be divided in many ways. Excellent for sleep lab, medical lab, or research space.



FOR MORE INFORMATION

NATASHA FELTEN

nfelten@colocomm.com

JON UNGAR

jungar@colocomm.com

303 327 5800



**COLORADO COMMERCIAL
COMPANIES**

383 CORONA STREET | SUITE 322

DENVER, CO 80218

WWW.COLOCOMM.COM

No warranty or representation, express or implied, is made as to the accuracy of the information contained herein, and the same is submitted subject to errors, omissions, change of price, rental or other conditions, withdrawal without notice, and to any special listing conditions imposed by our Principals.